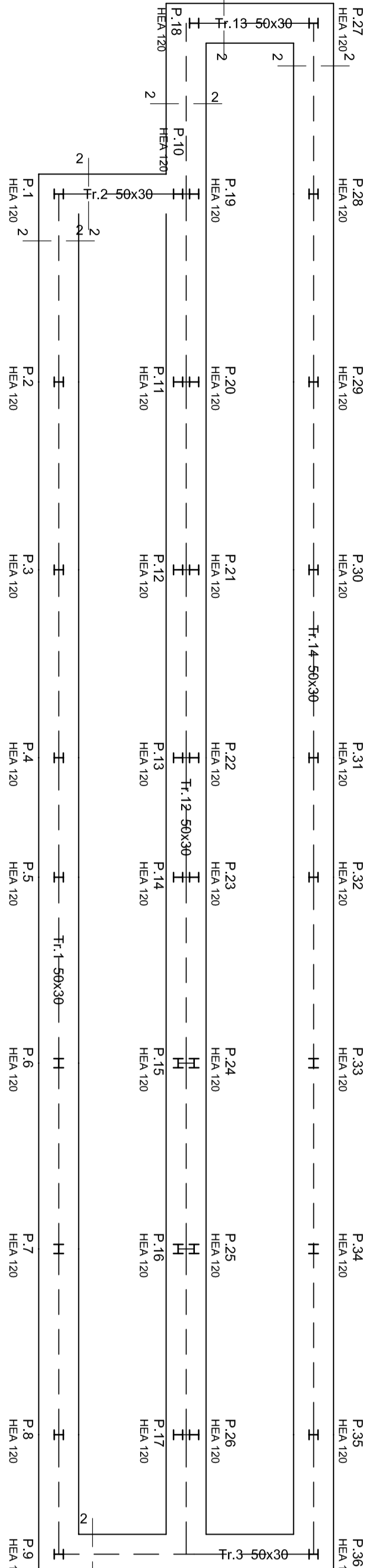
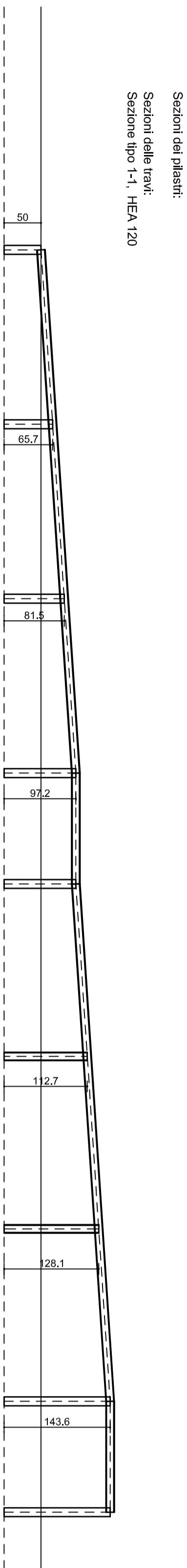
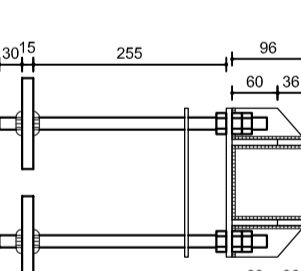
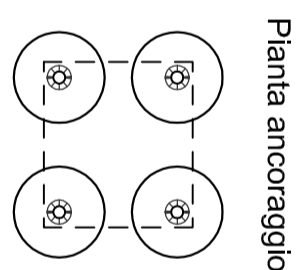
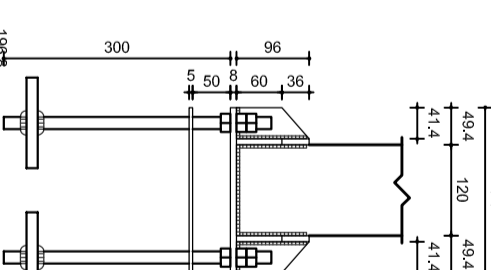
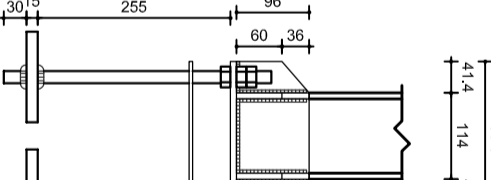
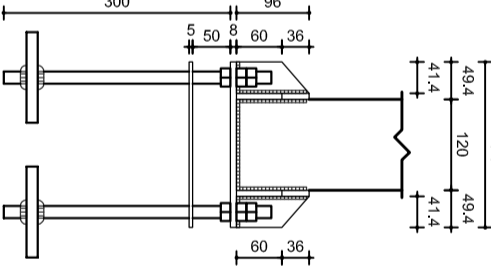
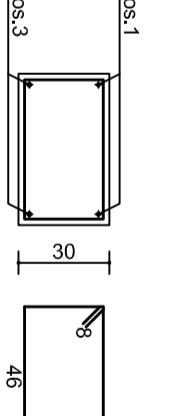
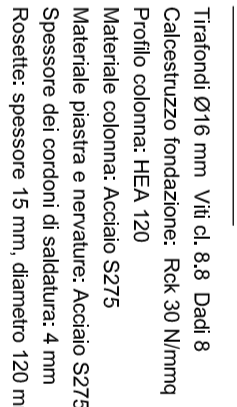
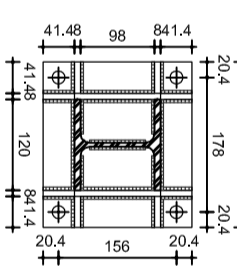
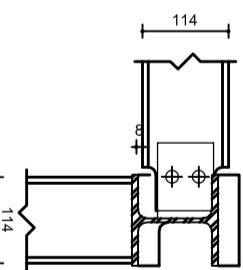
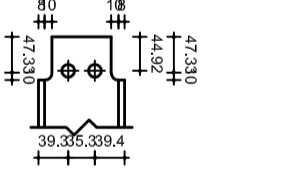
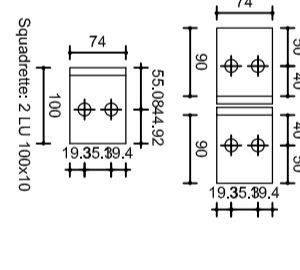
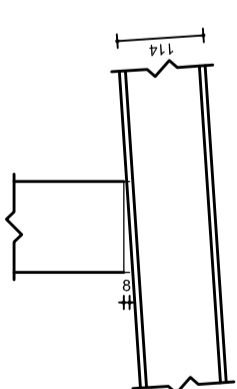
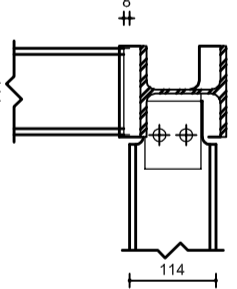
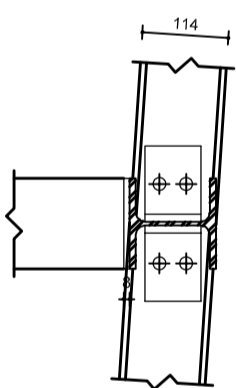
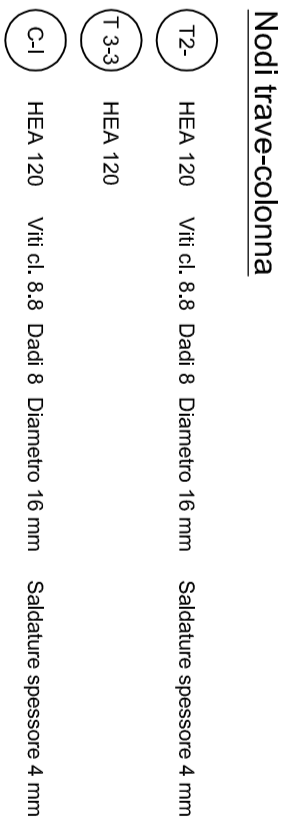
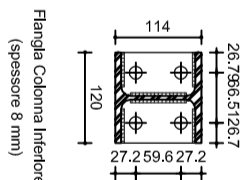
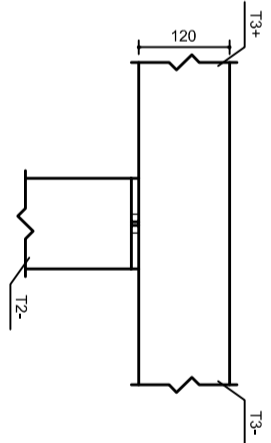


Impalcato da quota +0 a quota +200

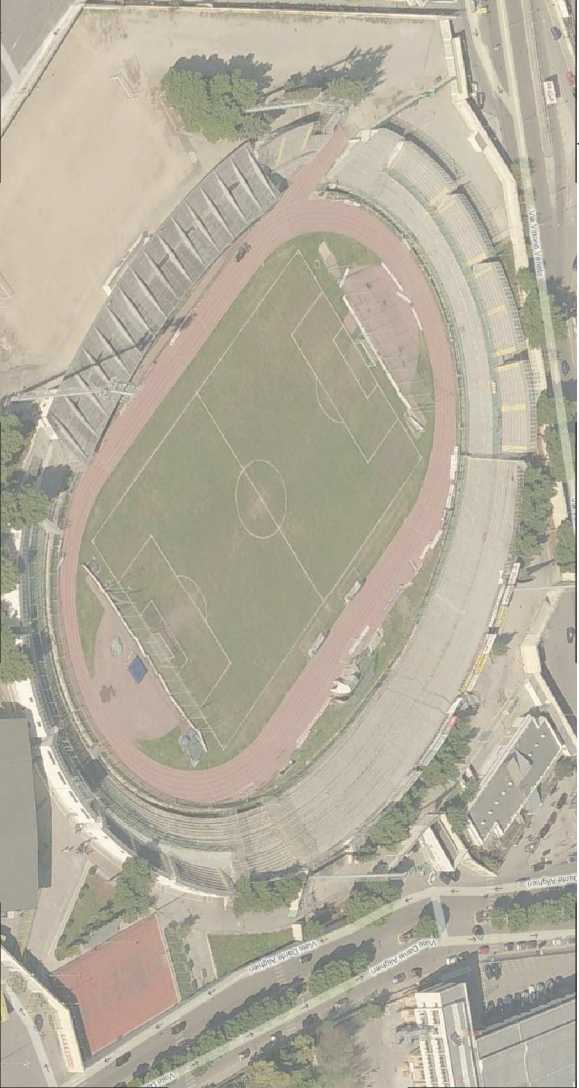


Impalcato a quota -50

Sezioni del plinast:
Sezioni delle travi:
Sezione tipo 2-2, intagliata 50x50



COMUNE DI BARILETTA
Provincia di Barletta-Andria-Trani



PROGETTO DEFINITIVO

Titolo progetto:
ADEGUAMENTO FUNZIONALE DELLO STADIO
COMUNALE "C. PUTTILLI" - COMPLETAMENTO 1° LOTTO

Comittente:
Comune di Barletta
corso V. Emanuele, 94 - 70051 Barletta (BT)

Progettazione:
Pierino Proietta
via Marino Correnti n.44
70126 - Bari (BA)

Titolo elaborato:
Carpenterie e Particolari Nodi
Rampe di accesso sud - Settore Tribuna Autorità

Cod. elaborato:
S 01

Scala: Varie
Data: 29/02/2017