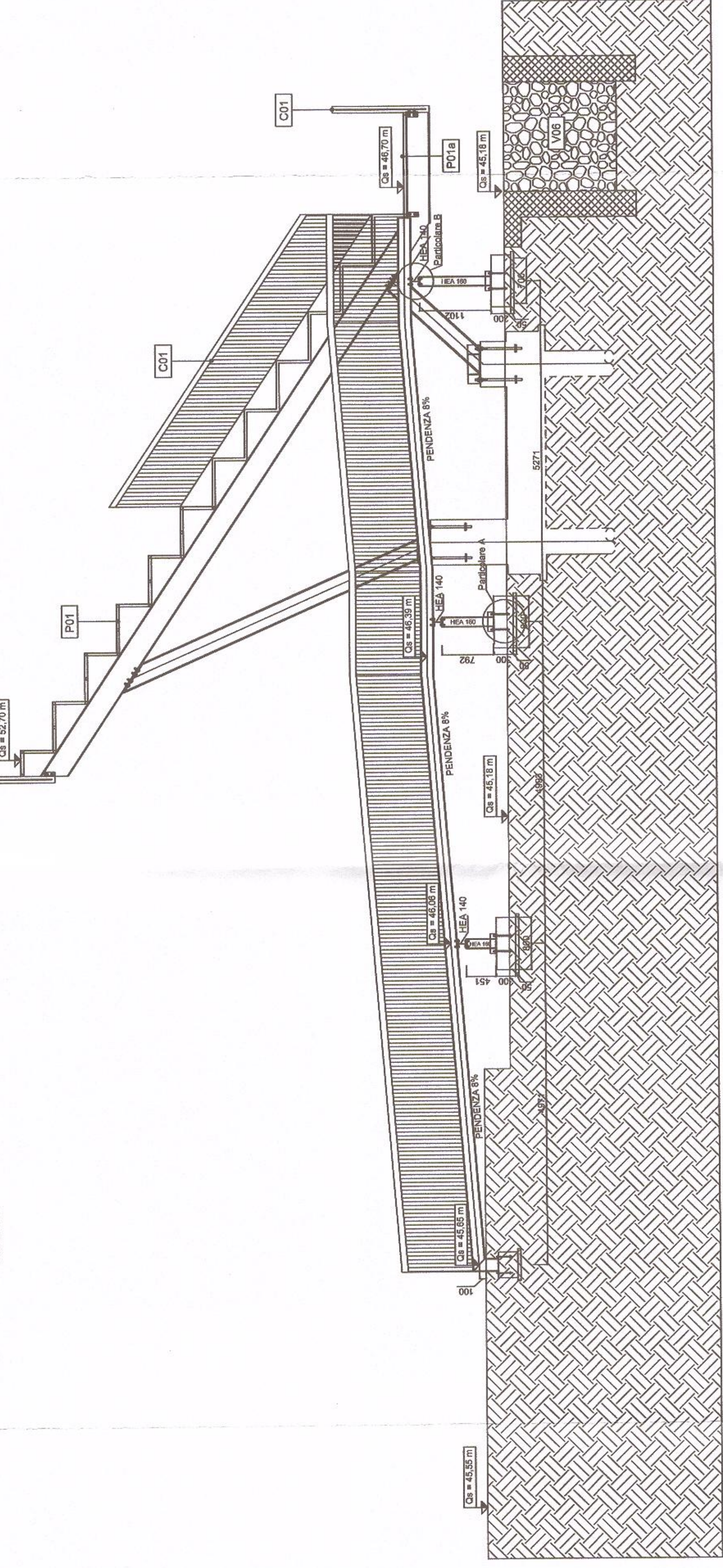


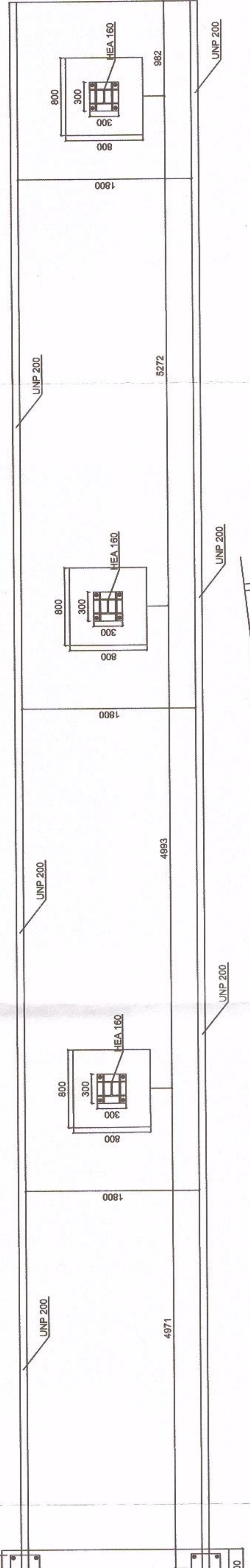
### ARCHITETTONICO RAMPA DISABILI

Scala 1:50



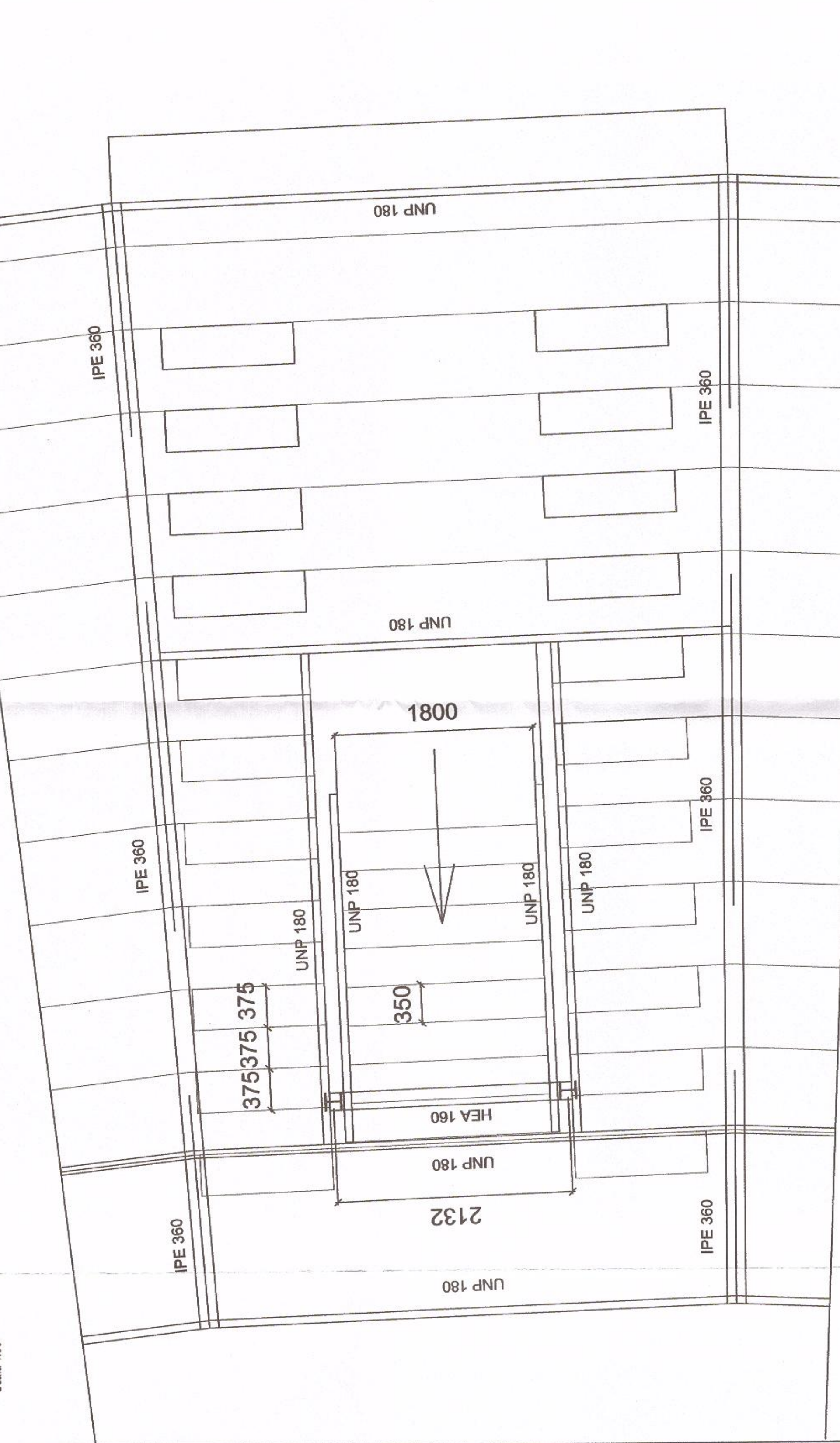
### PIANTA - RAMPA DISABILI

Scala 1:50



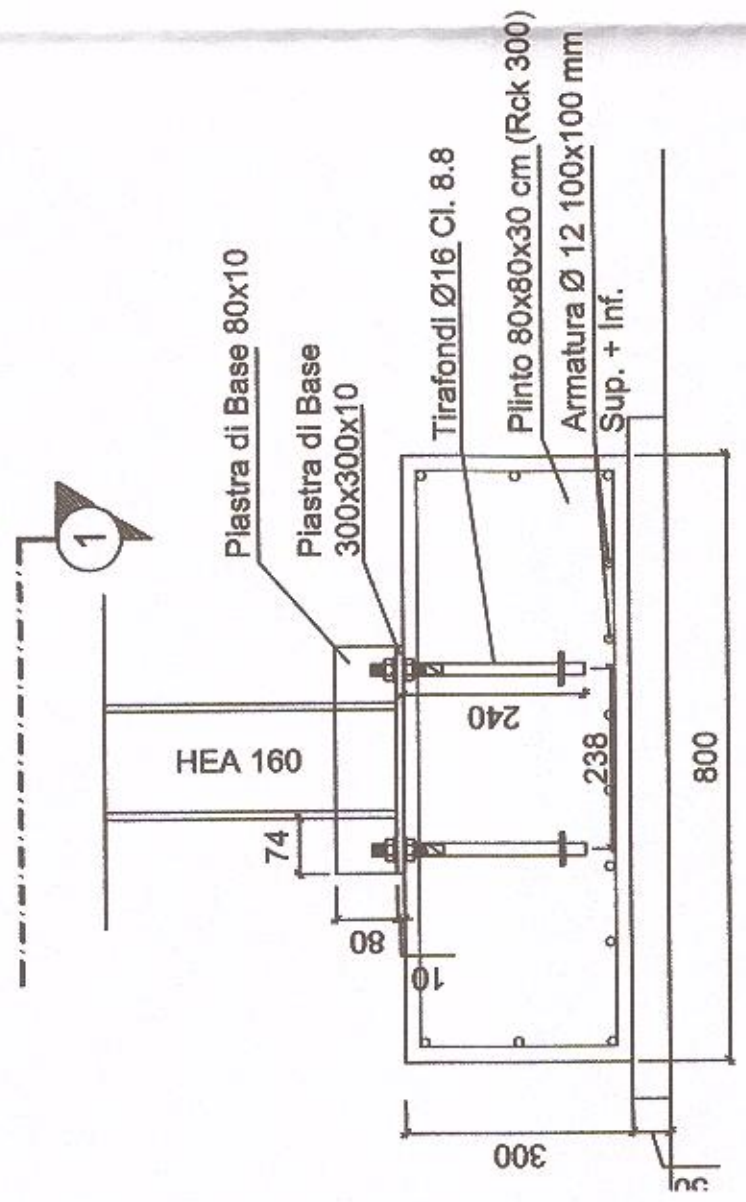
### PIANTINA SCALA accesso varchi

Scala 1:30



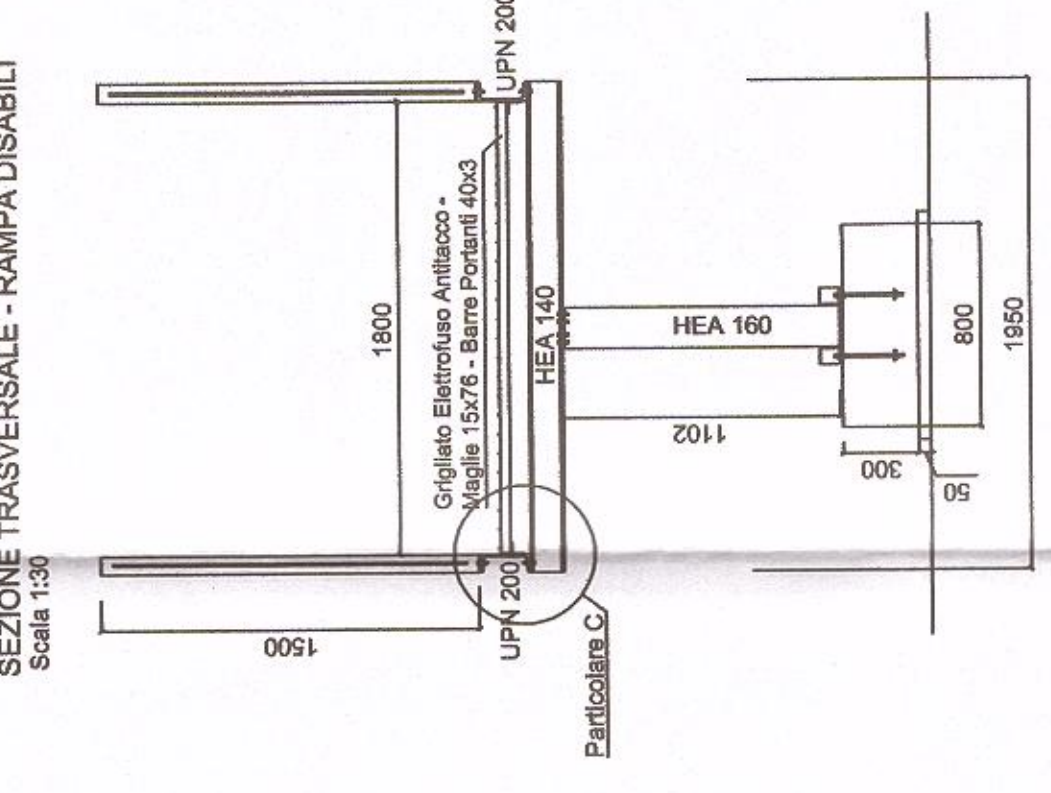
### PARTICOLARE A

Scala 1:10



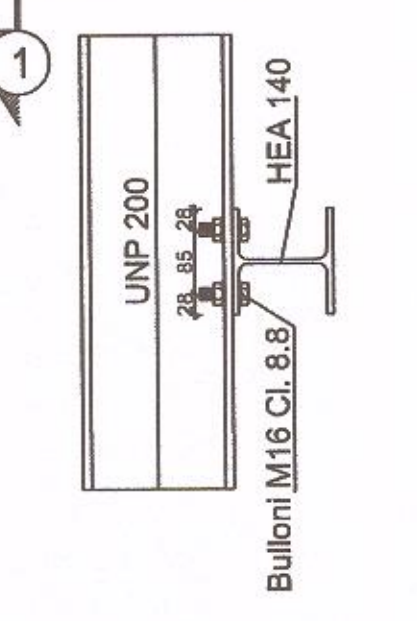
### SEZIONE TRASVERSALE - RAMPA DISABILI

Scala 1:30



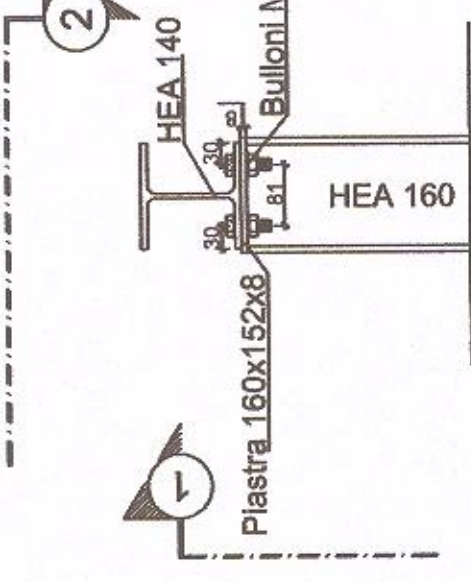
### PARTICOLARE C

Scala 1:10



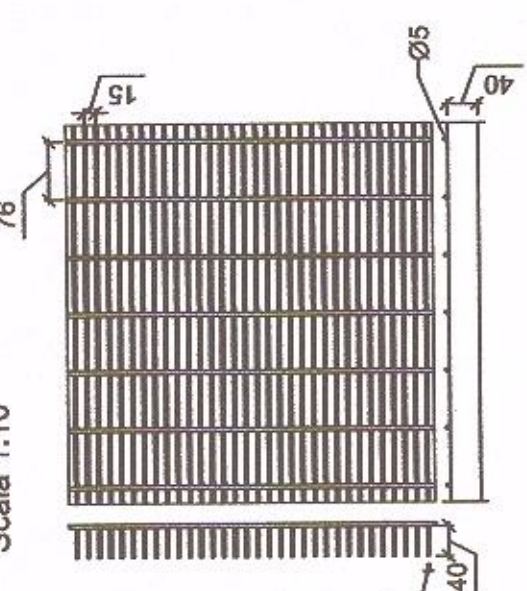
### PARTICOLARE B

Scala 1:10

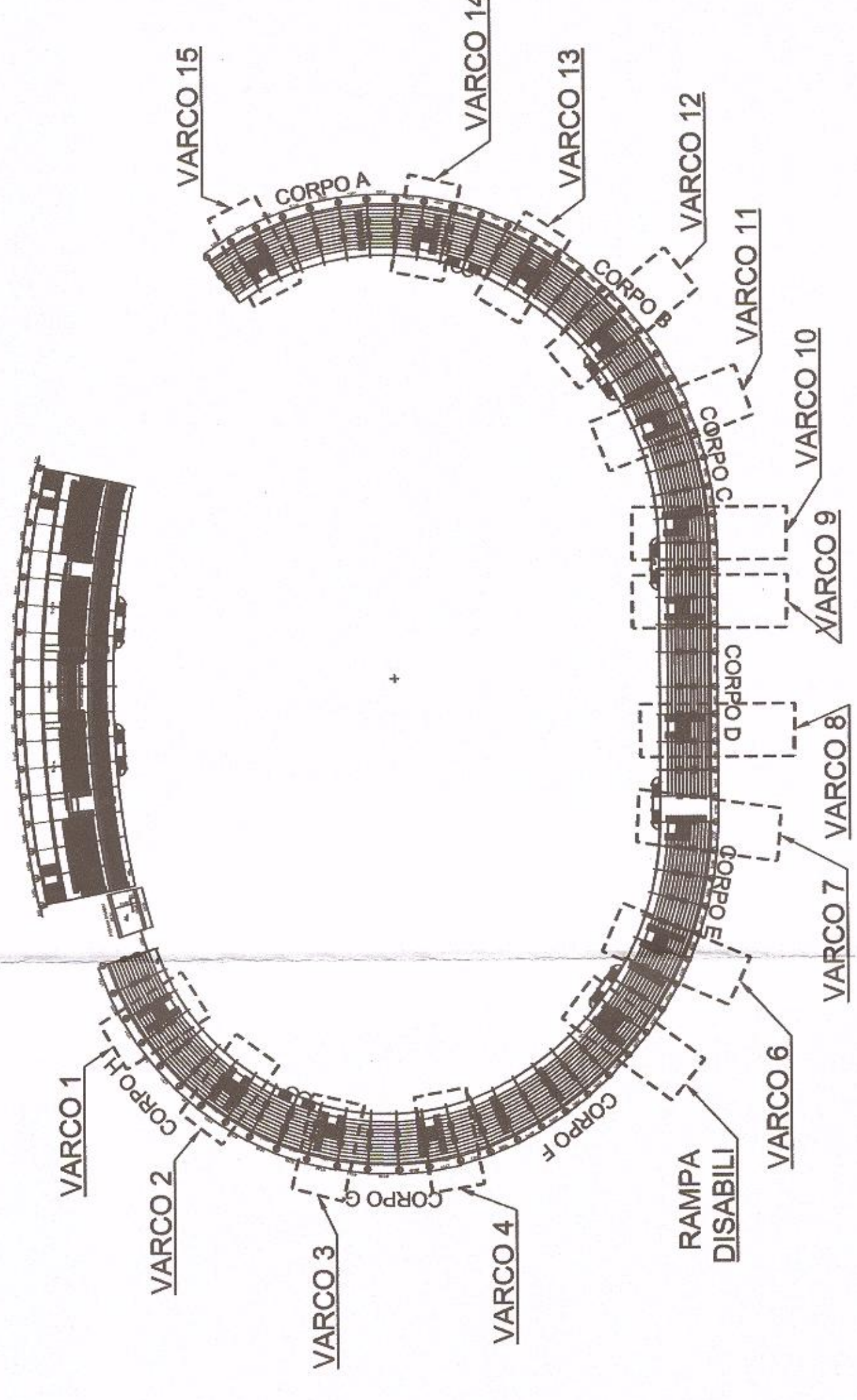


### GRIGLIATO

Scala 1:10

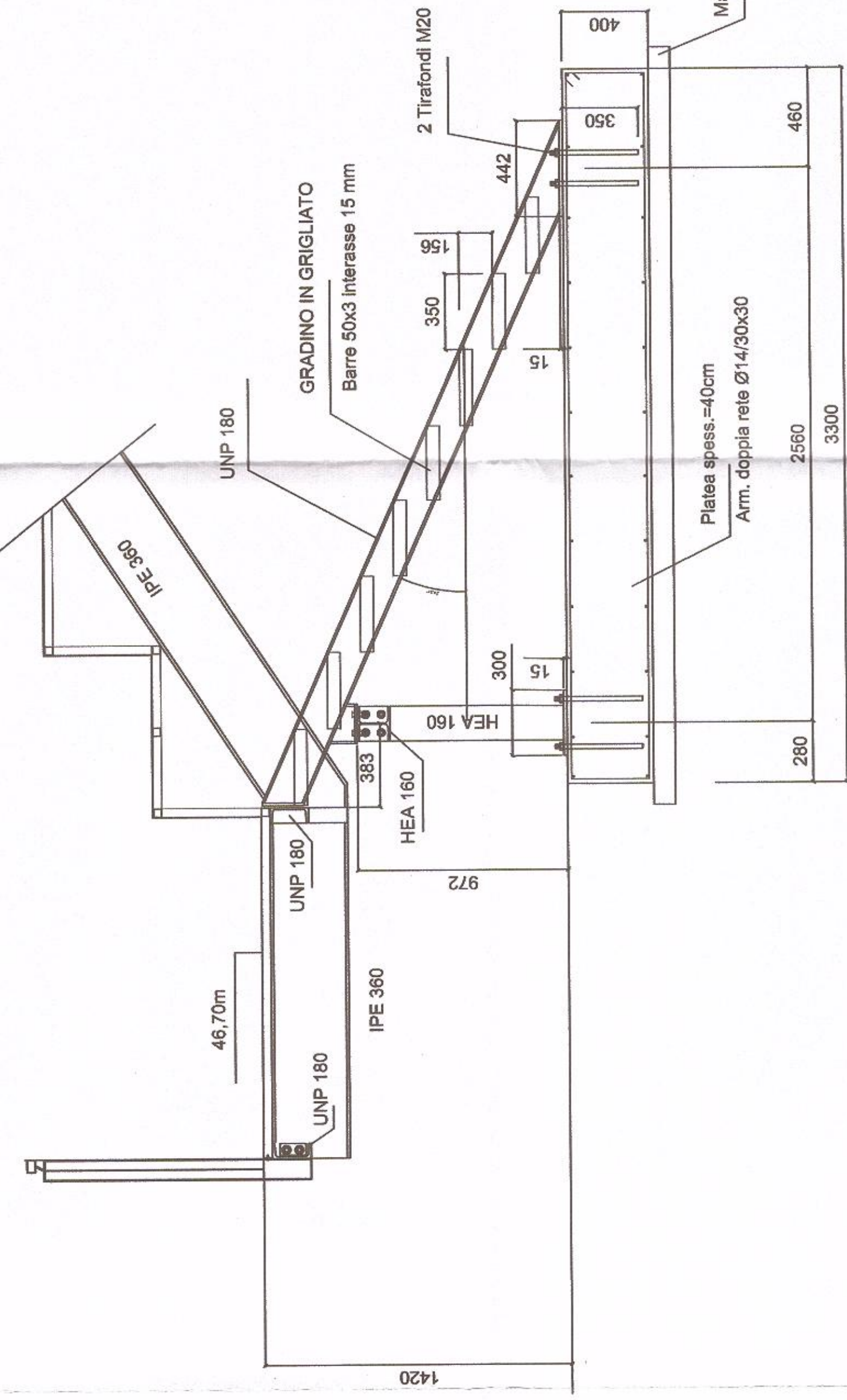


### PLANIMETRIA GENERALE DI INDIVIDUAZIONE VARCHI



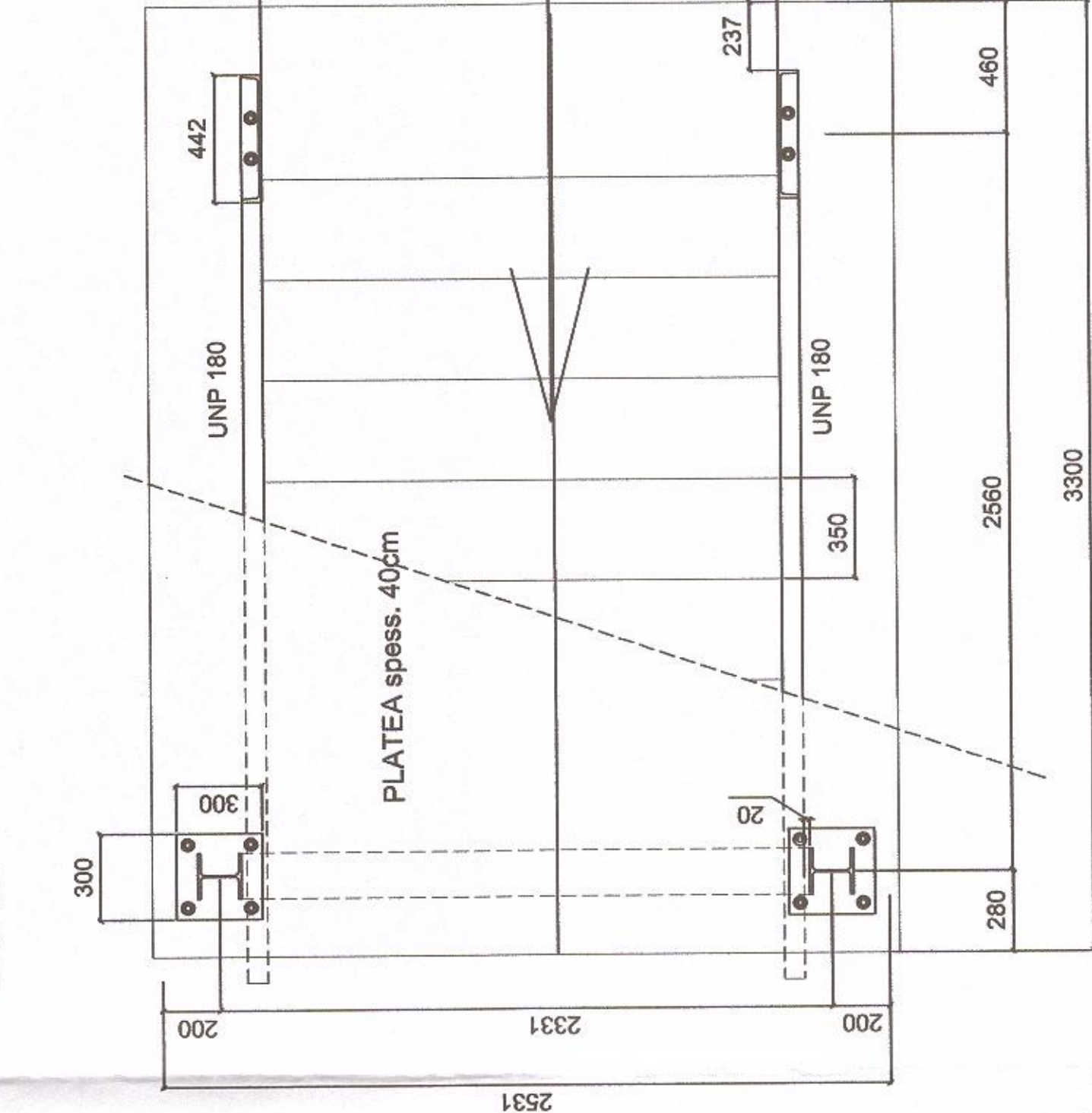
### Sezione SCALA accesso varchi

Scala 1:20



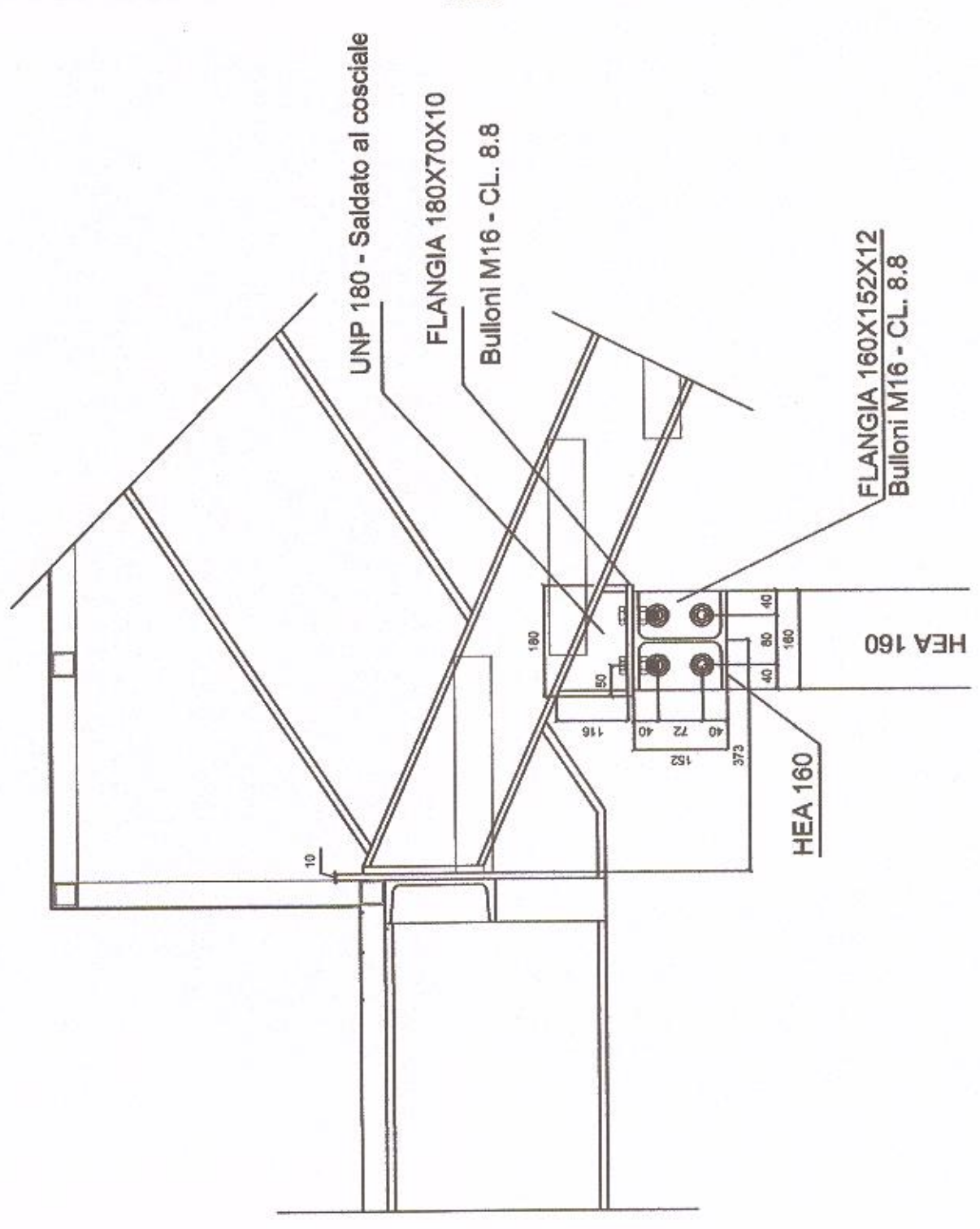
### Fondazione SCALA accesso varchi

Scala 1:20



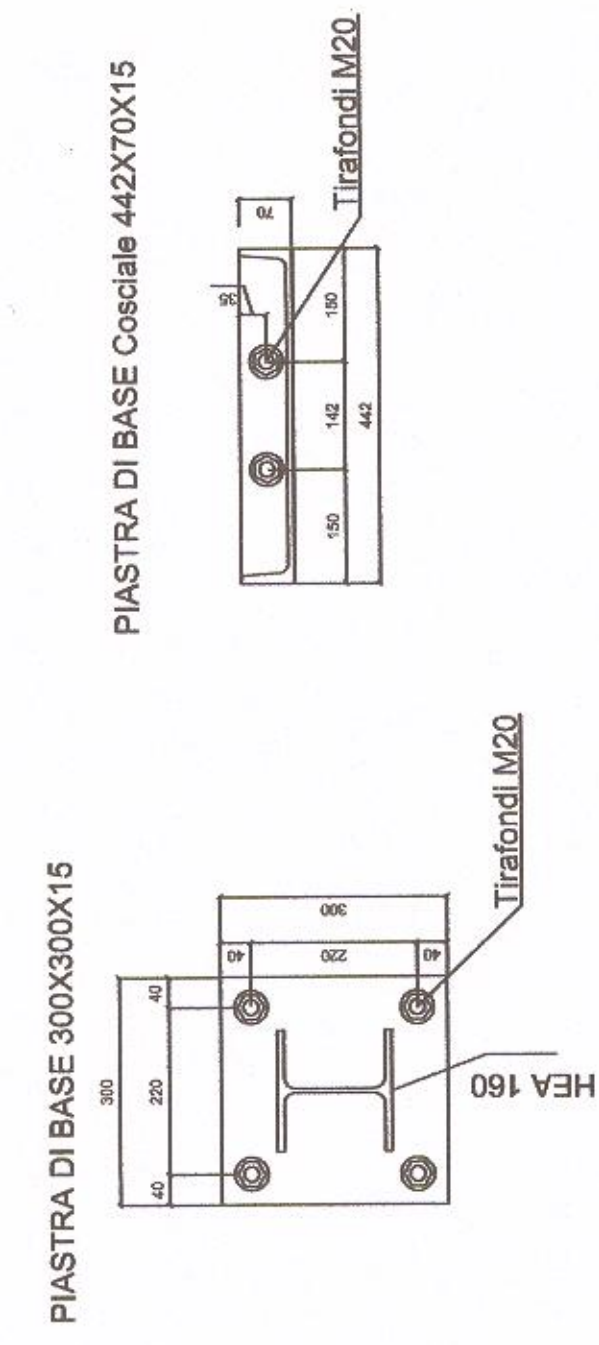
### Giunto TRAVE - PILASTRO

Scala 1:10

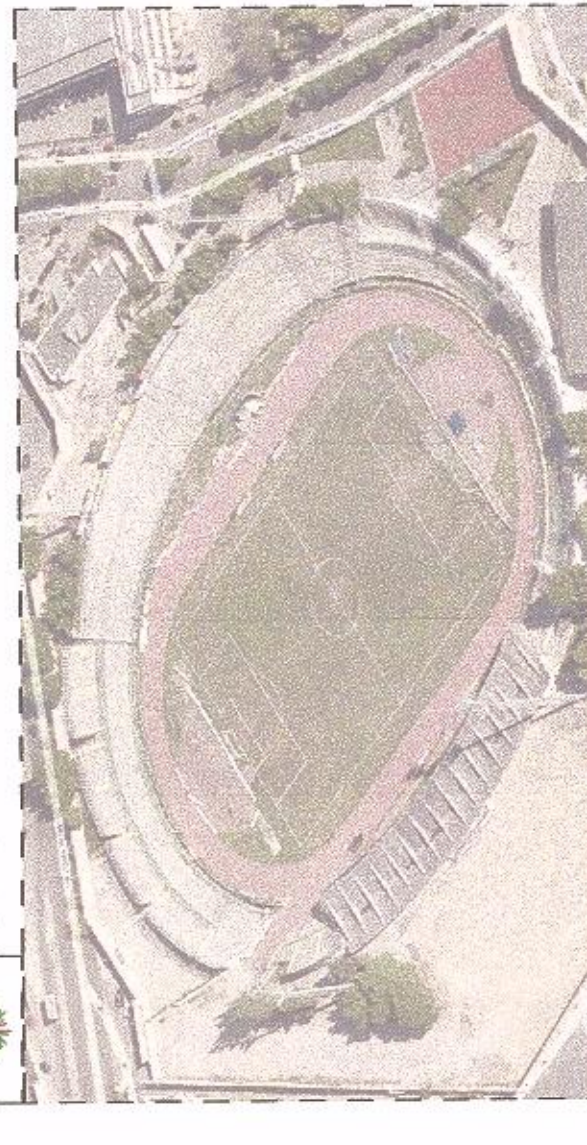


### Giunti di BASE

Scala 1:10



**COMUNE DI BARLETTA**  
Provincia di Barletta-Andria-Trani



Titolo progetto:  
**ADEGUAMENTO FUNZIONALE DELLO STADIO COMUNALE "C. PUTTILLI"**

Amministrazione applicabile:  
Comune di Barletta  
corso V. Emanuele, 94 - 70051 Barletta (BT)

Progettazione:  
C.M.S. S.p.A.  
S.S. Ingegneria Progettazione SpA  
80124 Napoli Zivone (SA)



C.M.S. S.p.A.  
Ing. Covello Domenico  
Crittore Tecnico dell'impresa  
Ing. Covello Roberto  
Ing. Covello Roberto  
Ing. Covello Roberto  
Ing. Covello Roberto

STUDIO INVESTITA  
Consulente Esterno dell'impresa  
Ing. Covello Domenico

**VARIANTE al DEPOSITO N° 24079**

Titolo elaborato: **SCALA DI ACCESSO VARCHI E RAMPA DISABILI**

CITTA' DI BARLETTA DOCUMENTO PRELIMINARE

19 DIC. 2016

SETT. LAVORI PUBBLICI

ST-V4

Aut. Pubblica