

studio tecnico ing. DUILIO MAGLIO - barletta

committente
EDIL BARI
s.r.l.
2 PIANTE

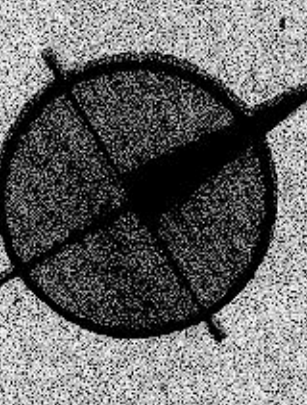
LOCALI per uso MERCEOLO
GICO-ARTIGIANALE su
strada di P.R.G. in Barletta
Data 10.12.1978 Scala 1:100.

EDIL BARI s.r.l.
(l'Amministratore Unico)



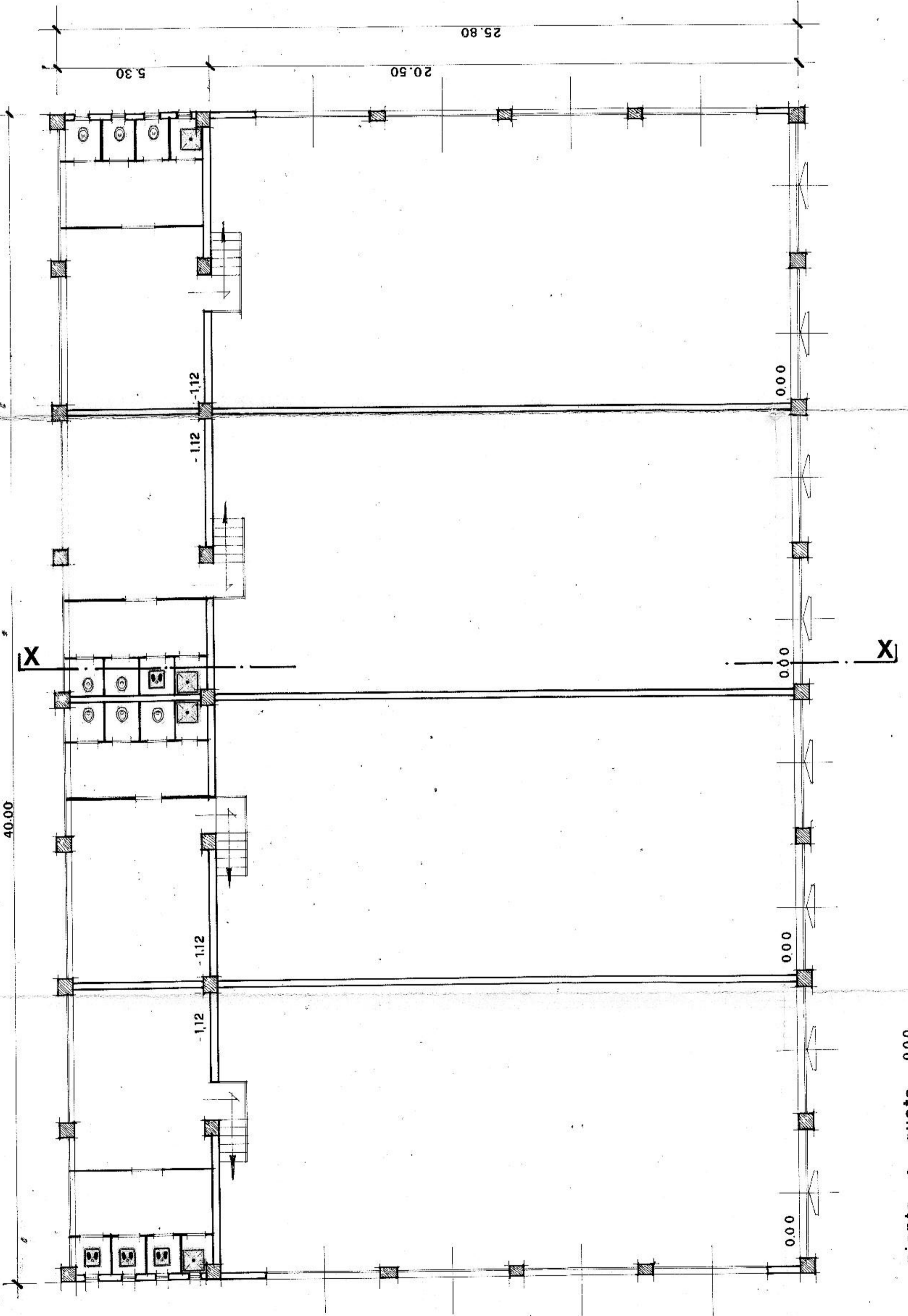
STUDIO EDILIZIA

[Handwritten signature]

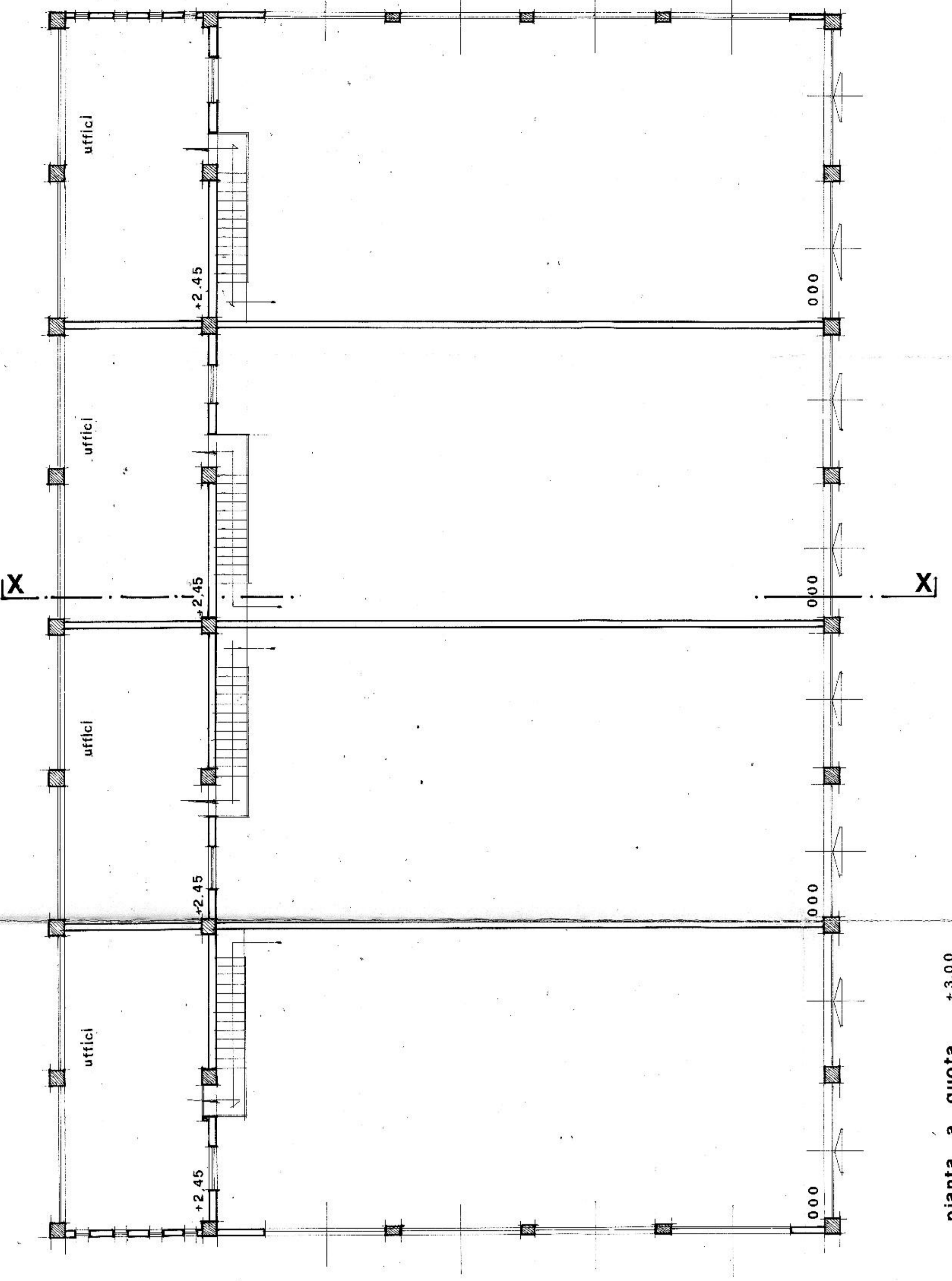


NORD

in variante convenzione n. 231/4/Z.P.2



pianta a quota 0.00



pianta a quota +3.00